

Thorpe Primary Newsletter November 2022

Christmas is coming!

Dear Parents,

It's an exciting time of year in school, with Christmas approaching and lots of activities planned! We can look forward to the Christmas dinner, Christmas Jumper Day, the decorations going up and lots more! Perhaps Father Christmas may even pay us a visit!



There have been some wonderful events in school! We're delighted that class assemblies are taking place again, with children able to share their learning with families. We've had some super trips, such as the Year 6 day at Duxford Imperial War Museum, and visitors too: Year 2 experienced a fascinating talk from an arctic explorer!



In Nursery they have been exploring colour and making some amazing chalk pictures! We're aware the cost of many trips has significantly increased; this is largely due to the massive increase in coach

hire. Sadly, we can't afford to subsidise the trips, and therefore at times we may have to cancel visits.

We're really pleased to share with you that we raised a tremendous £318.89 for Children in Need last Friday! Thank you for your support; we're sure the children

enjoyed coming to school dressed in colourful spotty clothes!



And finally, we very proudly draw your attention to a new logo we look forward to using!



Thank you to our whole school community for helping to achieve this!

Miss Anderson - Acting Head Teacher

A good start to the day



School starts at 8.30am for children in KS2, and 8.40am for Reception and KS1.



Children who arrive late are greatly disadvantaged: they miss starting the day with their peers, finding out about the day ahead and even the beginning of lessons. This means that they are often unsettled and confused about tasks. Their teacher will not always be able to re explain work.

It's very important that children establish good routines and habits, in preparation for the rest of their lives: punctuality is a life skill.

Please make sure your child has the best possible start to the school day, by enabling them to arrive on time.

Starting the school day			
Reception & KS1	KS2	Activity	What does this mean?
8.40	8.30	School starts	Your child needs to be in school at this time, not later
8.40 – 8.50	8.30 – 8.40	Registration	This is settling time; children have activities to do
8.50 – 8.55	8.40 – 8.45	Recorded as 'late' (L) Please record as 'L' in the register	Your child is late and has missed learning; this is an unsettled start to the day.
8.55 onwards	8.45 onwards	Recorded as 'unauthorised late' (U)	Your child is very late and has missed learning; this is a very unsettled start for your child. Your child has a half day unauthorised absence recorded. If this persists, you may receive a penalty notice.

Cycles in the playground

We are happy that lots of children cycle to school and use the cycle sheds in the playground. As we have a lot of children in school could you please ensure that your child walks their bicycle across the playground to avoid any collisions. It is advisable to lock their bike/scooter for safekeeping.



Reception 2023

The closing date for Reception applications is midnight on 15th January 2023. All applications should be made online at www.peterborough.gov.uk/admissions and click on Starting School in Reception 2023. If you require any help please visit the Peterborough City Council offices at Bittern Way, Fletton Quays, Peterborough PE2 8TY. A promotional video is now available on our website. <https://www.thorpeprimary.co.uk/page/?title=Reception&pid=18>



Nursery - January 2023

We have a few afternoon places in our Nursery starting January 2023. If your child is 3 or will be 3 before January 2023, please contact the school office.



If your child turns 3 between 1st January and 31st August 2023 you can apply for a place in the September term, please speak with the school office. Applications close on 31st April 2023.

Sickness reminder

If your child is ill, please telephone the school office before 9.30am on each day that they are away from school. Please specify what is wrong with your child "unwell" or "under the weather" are not sufficient, we need to know what their illness is. Registers must be kept daily, and we need to include absences with reasons.



Winter Weather Sets in!

As the weather becomes increasingly wet and cold, we ask now that all children bring a coat into school and wear several layers as we will be having windows open to aid ventilation. Children may not be able to go outside at playtime without warm and sensible clothing. Please make sure your child's name is on their coat.



Xmas Lunch Menu - ParentPay

Christmas is fast approaching, and the Christmas Lunch menu is now available on ParentPay. This is the only way to guarantee your child's Christmas lunch so please pre-order by midday on Sunday 11th December. If you haven't registered with ParentPay yet, please speak to the school office and they will supply you with login details. We would like to thank parents who use the online ParentPay system to book and pay for lunches for their children. You can also use ParentPay to pay for Breakfast Club and After School Care Club, Nursery Sessions, and school trips.



Attendance Policy

Our updated attendance policy is on the school website. If you have any questions regarding attendance or leave of absence from school, please speak to Mrs Fillmore, Attendance Officer or Miss Anderson.



Christmas Jumper Day

Tuesday 20th December is Christmas Jumper Day. We are asking everyone to wear their festive jumpers along with normal school skirt/trousers etc to make it a festive last day of term. There is no donation requested this is just for fun!



Christmas Performances

It's that time of year again and the Nursery, Reception and Year 2 children are working hard rehearsing for their Christmas plays. The times and dates are below:



Nursery Christmas Celebration – Thursday 8th Dec 9:15am

Year 2 - Bethlehem Bake-Off - Monday 12th Dec at 1:45pm

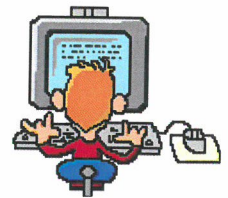
Year 2 - Bethlehem Bake-Off - Tuesday 13th Dec at 9:15am

Reception – Miracle in Town – Wednesday 14th Dec at 9:15am

Reception – Miracle in Town – Thursday 15th Dec at 2:00pm

Important Dates

Thurs 1 st Dec	3D & 3S Class Assembly
Tues 6 th Dec	Pantomime Day
Thurs 8 th Dec	Nursery Christmas Celebration
Mon 12 th Dec	Year 2 Xmas performance 1:45pm
Tues 13 th Dec	Year 2 Xmas performance 9:15am
Wed 14 th Dec	Reception Xmas performance 9:15am
Thurs 15 th Dec	Reception Xmas performance 2:00pm
Thurs 15 th Dec	Christmas Lunch
Fri 16 th Dec	After School Clubs finish
Mon 19 th Dec	Christmas Carousel
Tues 20 th Dec	Christmas Jumper Day
Tues 20 th Dec	Christmas Parties
Tues 20 th Dec	Christmas Carousel
Wed 21 st Dec	School term ends
Wed 4th January	School term begins



Remember, the dates for the whole year can also be found on our website!

www.thorpeprimary.co.uk